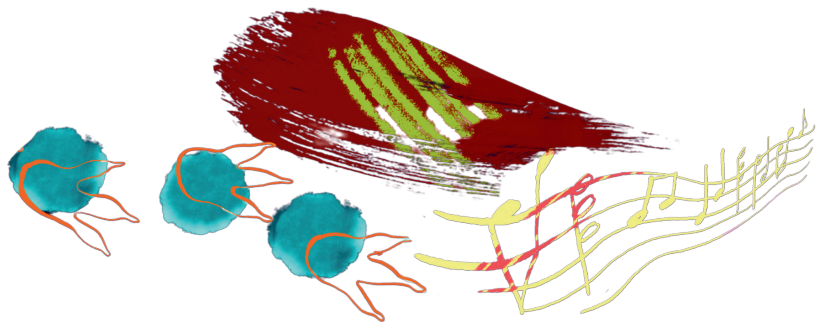




With thanks to...

Tom Denbigh for his scientific outside eye •
The Dinosaur Detective young people who
helped to make the show • The University of
Bristol • Arts Council England • Ute Leonards
and Nick Scott-Samuels • Charlie Williams •
Sam at Chateaux Projects • Denny Murray •



Created by Lloyd Coleman & Otic. An Unlimited and Polka Theatre Partnership Commission,
with support from Bristol Old Vic Ferment, The University of Bristol and Arts Council England.

**BRISTOL
OLD VIC**

UNLIMITED

POLKA
Where Theatre Begins



**A RIP-ROARING, PREHISTORIC SCIENCE POP
GIG FOR CURIOUS HUMANS!**



Hey, Dom and Lloyd here. Lloyd wrote the music for *The Colour of Dinosaurs* and Dom is the director, and we are both in the show too! We are so excited to be performing *The Colour of Dinosaurs* for the first time ever at Bristol Old Vic.

We are very proud of our ROAR-some show, it's a kaleidoscope of funky music, real-life stories and fascinating science. Our starting point was a chance meeting with world-renowned palaeontologist Dr Jakob Vinther - who you'll also meet today. Jakob's big discovery has changed what the world knows about the colour of dinosaurs and it got our brains whirring... We then brought together a team of amazing, creative people and we set to work on the show that you're about to see.

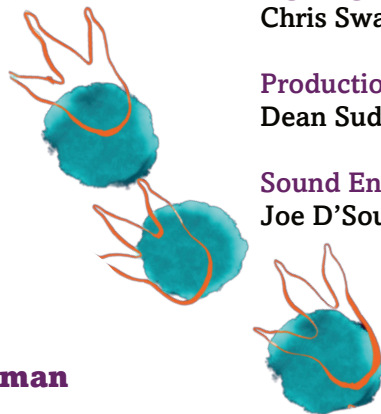
Our show celebrates all of our differences including disability, cultural identity and of course, how much we all love dinosaurs. We hope you have a great time stomping your feet like a T-Rex with us today!



Dom Coyote



Lloyd Coleman



Creative team

Directed by
Dom Coyote

Music by
Lloyd Coleman

Writing by
Malaika Kegode

Produced by
Liz Counsell for Otic

Devised and Performed by
Dom Coyote
Lloyd Coleman
Jakob Vinther
Victoria Oruwari
Harry Miller
Roxana Vilks

Dramaturg and Associate Director
Kyla Goodey

Designed by
Amy Pitt and Saskia Tomlinson

Lighting Design by
Chris Swain

Production Management for Otic
Dean Sudron

Sound Engineer
Joe D'Souza



Access Assistants
Lucy Turner
Stefan Boakye (Assistant Producer)

Sensory Design Consultancy by
Annie Davies

BSL Interpretation by
Jake Bevan

BSL Consultants
David Ellington and Nikki Harris

Stage Management Cover
Jonah Stein

Dramaturgical Support for Polka Theatre
Helen Matravers

Production Management for Bristol Old Vic
Chloe Ashley
Imogen Senter

Dramaturgical and Producing support for Bristol Old Vic
Nancy Medina
Ben Atterbury
Tan Follett

